

H-500, H-1000, T-1000

Head- and tailstock positioner with horizontal rotation.

One station positioner for workpieces requiring rotation about one axis. The free standing headstock can be mounted directly on the floor at an appropriate distance from the tailstock.

The head- and tailstock with MotoMount fixture mounting system must always be used together.



H-500Y



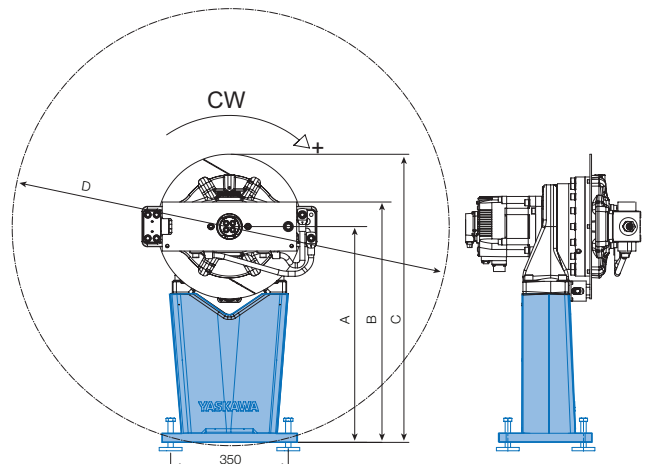
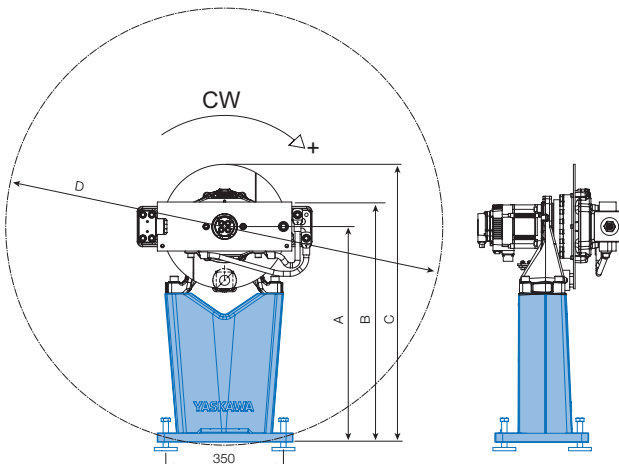
H-1000Y

Technical data		H-500Y		H-1000Y	
Max. capacity	load	500 kg		1000 kg	
	offset	191 mm		219 mm	
Motor power		1.3 kW		3.0 kW	
Gear ratio	reducer	165:1		170:1	
Speed	nominal	9.0 rpm		8.8 rpm	
	maximum	23 rpm		23 rpm	
Torque	rated	1177 Nm		2689 Nm	
	continuous rated	941 Nm		2151 Nm	
	peak	2354 Nm		5378 Nm	
Rated welding current Standard	100%	350 A		350 A	
	60%	460 A		460 A	
Rated welding current Option	100%	860 A		860 A	
	60%	1120 A		1120 A	
	35%	1380 A		1380 A	
Max fixture width	diameter	1300 mm	1700 mm	1300 mm	1700 mm
Headstock Part No.		141502-700	141502-701	141504-700	141504-701
Tailstock Part No.		141506-100	141506-101	141506-100	141506-101

New generation
Sigma-7

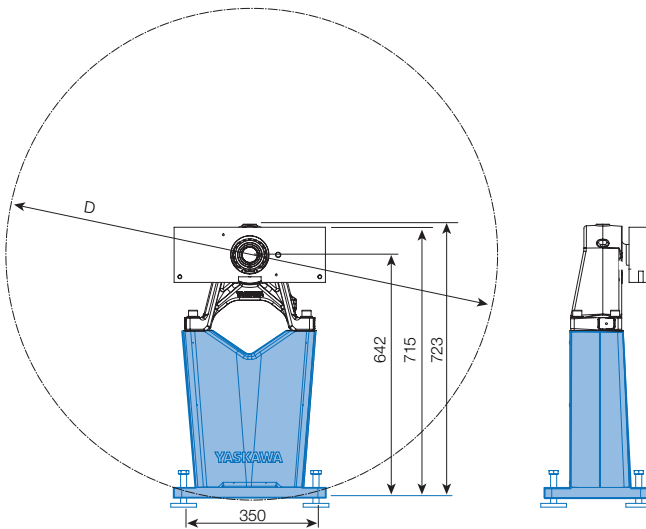
Fixture holder
MotoMount

Controlled by
YRC1000

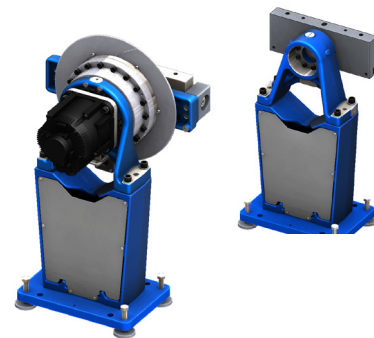


Type	Part No.	D	A	B	C
H-500Y	141502-700	1300	642	715	827
	141502-701	1700	842	915	1027

Type	Part No.	D	A	B	C
H-1000Y	141504-700	1300	642	715	857
	141504-701	1700	842	915	1057



Type	Part No.	D	A	B	C
T-1000	141506-100	1300	642	715	723
	141506-101	1700	842	915	923
	141507-100	1300	642	715	723
	141507-101	1700	842	915	923



The head- and tailstock must always be used together.